

MPI-036

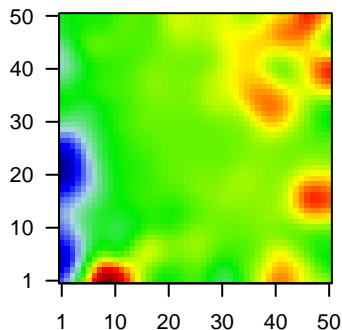
Global Summary

%DE = 0.04
 # genes with fdr < 0.2 = 386 (136 + / 250 -)
 # genes with fdr < 0.1 = 319 (110 + / 209 -)
 # genes with fdr < 0.05 = 257 (87 + / 170 -)
 # genes with fdr < 0.01 = 135 (44 + / 91 -)

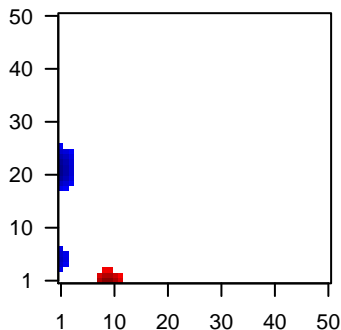
 # genes in genesets = 13152

<FC> = 0
 <t-score> = 0.06
 <p-value> = 0.28
 <fdr> = 0.96

Portrait



Regulated Metagenes



Global Genelist

Rank	ID	log(FC)	fdr	p-value	Description
1	44790_s_at	-2.03	2e-16	5e-13	42 x 49 RUN and cysteine rich domain containing beclin 1 interacting
2	203685_at	-2.03	2e-16	5e-13	0 x 21 BCL2, apoptosis regulator [Source:HGNC Symbol;Acc:HGNC
3	204562_at	-1.86	2e-16	5e-13	0 x 20 interferon regulatory factor 4 [Source:HGNC Symbol;Acc:HGI
4	204789_at	-1.74	2e-16	5e-13	0 x 39 formin like 1 [Source:HGNC Symbol;Acc:HGNC:1212]
5	207777_s_at	-1.49	2e-16	5e-13	0 x 18 SP140 nuclear body protein [Source:HGNC Symbol;Acc:HGNC
6	214669_x_at	-1.1	2e-16	5e-13	0 x 3
7	217022_s_at	-2.33	2e-16	5e-13	0 x 2 immunoglobulin heavy constant alpha 2 (A2m marker) [Sourc
8	219471_at	-1.83	2e-16	5e-13	42 x 49 RUN and cysteine rich domain containing beclin 1 interacting
9	221651_x_at	-1.08	2e-16	5e-13	0 x 3 immunoglobulin kappa constant [Source:HGNC Symbol;Acc:I
10	221671_x_at	-1.05	2e-16	5e-13	0 x 3 immunoglobulin kappa constant [Source:HGNC Symbol;Acc:I
11	221601_s_at	-1.36	7e-16	2e-10	0 x 21 Fc fragment of IgM receptor [Source:HGNC Symbol;Acc:HGNC
12	204281_at	2.28	1e-14	2e-09	35 x 36 TEA domain transcription factor 4 [Source:HGNC Symbol;Acc
13	212496_s_at	-1.38	1e-13	8e-09	46 x 38 lysine demethylase 4B [Source:HGNC Symbol;Acc:HGNC:29
14	209339_at	-1.39	6e-13	8e-09	1 x 6 siah E3 ubiquitin protein ligase 2 [Source:HGNC Symbol;Acc
15	208392_x_at	-1.81	8e-13	1e-08	0 x 19 SP110 nuclear body protein [Source:HGNC Symbol;Acc:HGNC
16	208791_at	-1.43	1e-12	2e-08	0 x 3 clusterin [Source:HGNC Symbol;Acc:HGNC:2095]
17	210201_x_at	-1.34	4e-12	2e-08	0 x 23 bridging integrator 1 [Source:HGNC Symbol;Acc:HGNC:1052
18	221044_s_at	-1.75	4e-12	2e-08	0 x 14 tripartite motif containing 34 [Source:HGNC Symbol;Acc:HGNC
19	207509_s_at	2.04	5e-12	2e-08	11 x 10 leukocyte associated immunoglobulin like receptor 2 [Source
20	37892_at	2.03	6e-12	1e-07	11 x 0 collagen type XI alpha 1 chain [Source:HGNC Symbol;Acc:HGNC

Global Geneset Analysis

Rank	GSZ	p-value	#all	Geneset
<i>Overexpressed</i>				
1	10.6	NULL	63	GSEA C2ANASTASSIOU_CANCER_MESENCHYMAL_TRANSITION_SIGN
2	9.63	NULL	700	Chr Chr 12
3	9.06	NULL	196	HM HALLMARK_EPITHELIAL_MESENCHYMAL_TRANSITION
4	8.8	NULL	575	GSEA C2CAIRO_HEPATOBLASTOMA_CLASSES_UP
5	8.37	NULL	585	Chr Chr 7
6	8.33	NULL	214	LymphomaL1ENZ_Stromal signature 1
7	7.88	NULL	60	GSEA C2TURASHVILI_BREAST_LOBULAR_CARCINOMA_VS_LOBULAR
8	7.76	NULL	1052	GSEA C2DODD_NASOPHARYNGEAL_CARCINOMA_DN
9	7.67	NULL	728	GSEA C2KRIGE_RESPONSE_TO_TOSEDOSTAT_24HR_DN
10	7.62	NULL	616	GSEA C2WEL_MYCN_TARGETS_WITH_E_BOX
11	7.42	NULL	197	GSEA C2NABA_CORE_MATRISOME
12	7.37	NULL	247	GSEA C2BOQUEST_STEM_CELL_UP
13	7.36	NULL	138	GSEA C2VECHI_GASTRIC_CANCER_ADVANCED_VS_EARLY_UP
14	7.25	NULL	78	MelanomaL1Tirosh_CAF-cell specific genes
15	7.17	NULL	212	CC extracellular matrix
16	6.99	NULL	58	GSEA C2TURASHVILI_BREAST_LOBULAR_CARCINOMA_VS_DUCTAL
17	6.84	NULL	17	LymphomaL1Mukema_BCL2 UP_BCL6 DN
18	6.81	NULL	53	MF extracellular matrix structural constituent
19	6.59	NULL	335	GSEA C2SCHUETZ_BREAST_CANCER_DUCTAL_INVASIVE_UP
20	6.57	NULL	253	CC proteinaceous extracellular matrix
<i>Underexpressed</i>				
1	-13.56	NULL	317	Cancer SPANG_BCL6-index2
2	-11.85	NULL	355	ReferenceL1SrinivasanImmune system
3	-11.77	NULL	3767	ChromatinL1Ballesterperipheral blood_6_EnhG
4	-11.55	NULL	382	Chr Chr 15
5	-11.33	NULL	626	ChromatinL1Kobayashikiller cells peripheral blood_3_TxFnk
6	-11.25	NULL	589	Colon CancerL1HobbsTCGA-expr_kmeans_E_CIMP.H_UP_Cluster4_DN
7	-11.16	NULL	85	LymphomaL1ChenDLBCL UP
8	-10.88	NULL	3682	ChromatinL1Kobayashikiller cells peripheral blood_6_EnhG
9	-10.54	NULL	5404	LymphomaL1HOPP_Strong_enhancer
10	-10.48	NULL	85	LymphomaL1Mukema_BCL2 DN_BCL6 UP
11	-10.36	NULL	3524	ChromatinL1Kobayashiregulatory cells peripheral blood_6_EnhG
12	-10.27	NULL	642	ChromatinL1Kobayashikiller cells peripheral blood_3_TxFnk
13	-10.25	NULL	166	HM HALLMARK_INTERFERON_GAMMA_RESPONSE
14	-10.04	NULL	3223	ChromatinL1Kobayashimacrophages peripheral blood_6_EnhG
15	-10.02	NULL	431	BP immune system process
16	-10.02	NULL	4208	ChromatinL1Kobayashiperipheral blood_6_EnhG
17	-10.01	NULL	932	ChromatinL1Kobayashiperipheral blood_3_TxFnk
18	-9.9	NULL	2144	ChromatinL1Kobayashinaive cells peripheral blood_6_EnhG
19	-9.68	NULL	90	GSEA C2BASSO_CD40_SIGNALING_UP
20	-9.65	NULL	693	ChromatinL1Ballesterperipheral blood_3_TxFnk

p-values

